

1 Lens Tinting and Transparency

LENS TINT CODE	Visible	Weather	Usage
CAT.0	80%-100%		Night time or low light riding.
CAT.1	43%-80%		Low light riding.
CAT.2	18%-43%		Sunny and partly cloudy conditions.
CAT.3	8%-18%		Sunny conditions or water sports.
CAT.4	3%-8%		Snowy conditions. (Unsuitable for driving&night)

2 Specifications

Icon	Material	Characteristics
PL	Polarized Lenses	Polarized film is laminated between two lenses and acts like a special window shade to block harmful light, while enable vision. • Outstanding color perception • Enhanced contrast vision • Glare-free • 100% UV protection • Impact resistant • Scratch-resistant
PC	Polycarbonate Lenses(PC)	• 100% UV protection • Impact resistant • Heat resistant • Lightweight
Photochromic	PC Photochromic Lenses	PC Photochromic lenses can be the best solution to optimize vision under different light conditions without being bothered to switch sunglasses. It can be adjust automatically responding to the intensity of UV, providing the right color perception and darkness for optimal performance and relieving eyestrains. Meanwhile, with excellent weather resistance property.
TR	TR90 Frame	Manufacture from TR90 material by EMS Grilamid of Switzerland. • Heat resistant • Chemical resistant • Lightweight
PC	Polycarbonate Frame(PC)	• Impact resistant • Heat resistant • Lightweight
TPEE	TPEE Frame	TPEE is a kind ultra flexible material. It can be flexible as rubber, but also can be strong as plastic. The feature has anti-impact and anti-bending fatigue. Under low and high temperature, keeping great flexibility and performance.
	Eye-glass Lens Frame	Attach prescription lenses to frame.

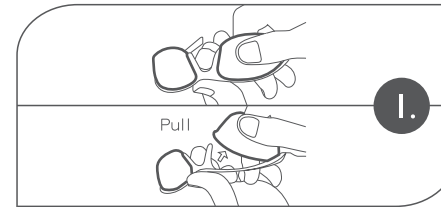
3 Instructions for removing and replacing lenses

Use only specified ReadyRun lenses for ReadyRun eyewear. Clean lenses after installing.

1. Half-rimmed Sunglasses

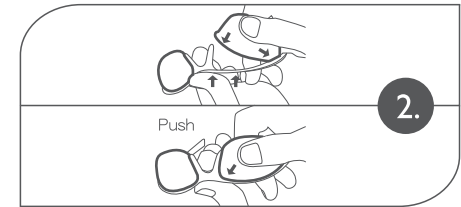
● Removal

With one hand hold glasses frame firmly. With other hand, pull out lens from nosepiece side until it is free of frame(see fig.1).



● Installation

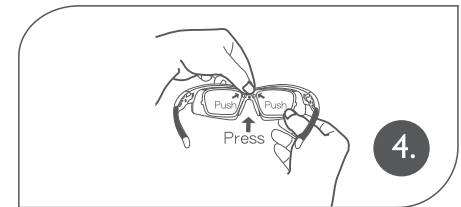
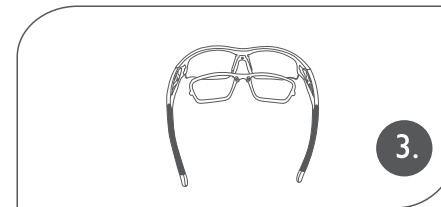
Fit outer lens tab (closest to frame arm)(see fig.2). Align and fit second tab, making sure lens rim is securely seated.



2. Prescription Lens Frame

● Prescription Lens Installation

Align tab on bridge of prescription frame with socket on bridge of main frame, (see fig.3) press in firmly to lock together (see fig.4).



4 Limited Warranty

- The frame are guaranteed for one year and the lenses are guaranteed for three months from the date of purchase. In case of failure under normal use during the warranty period, please send the complete product together with warranty card or proof of purchase to the main agent for warranty repair service, excluding damage caused by human factors and normal wear and tear.
- If the product is found to be defective in its original manufacture, you may apply to the original distributor or general agent for a new product within 7 days from the date of purchase with the product warranty card or proof of purchase.
- In the event of a dispute regarding a product defect, the original manufacturer reserves the right to determine whether or not the product is defective.
- If you have any questions about the product and accessories, please contact the general agent.

5 Care and Cleaning

- All ReadyRun glasses come with a high-quality microfiber pouch or eyeglass cord pouch (whichever is the original) and QR code instructions for use of the product.
- When the glasses are not in use, please store them in the included the high quality microfiber bag or eyeglass cord bag.
- Do not place the glasses directly in the car under direct sunlight.
- Clean regularly with cold water and dry with a soft cloth after rinsing to prolong product life.